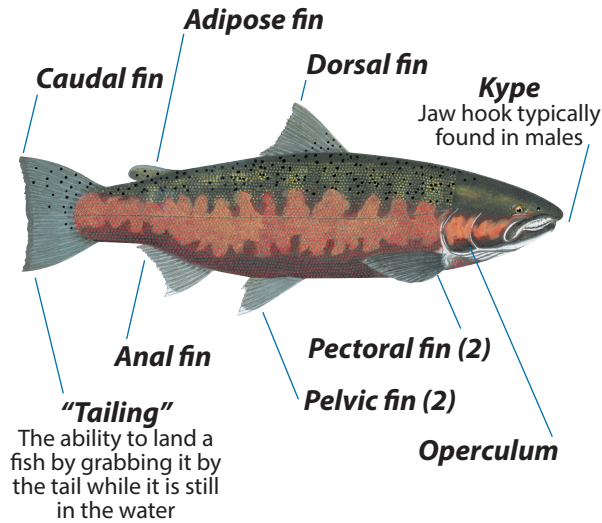
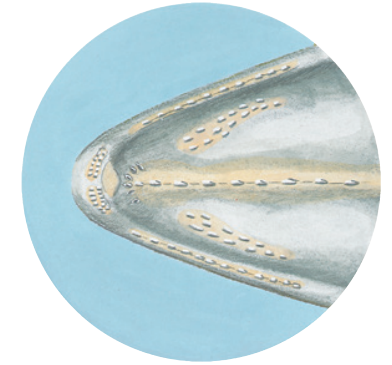
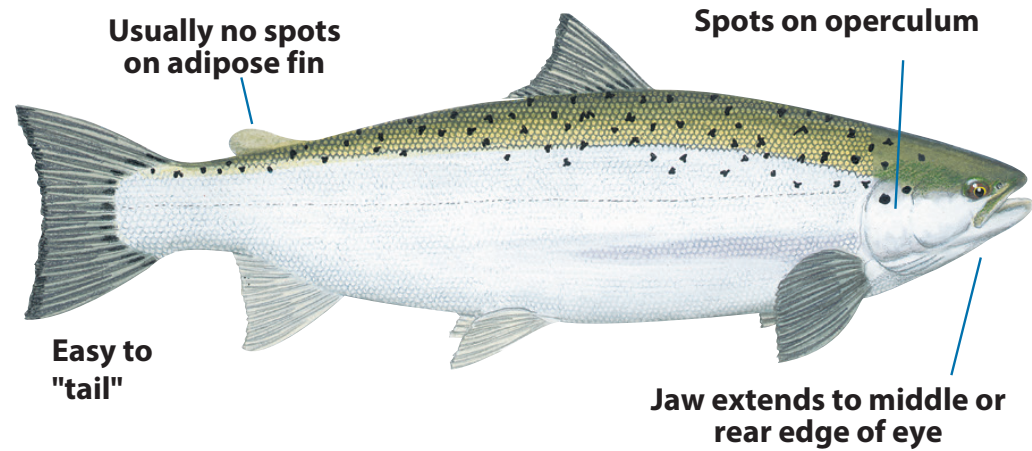


## Body Features Used in Identification

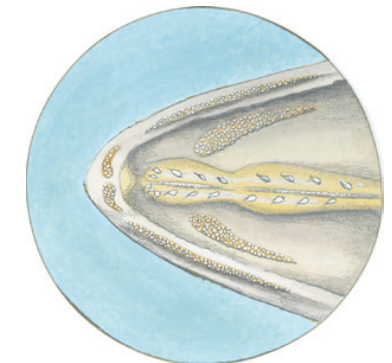
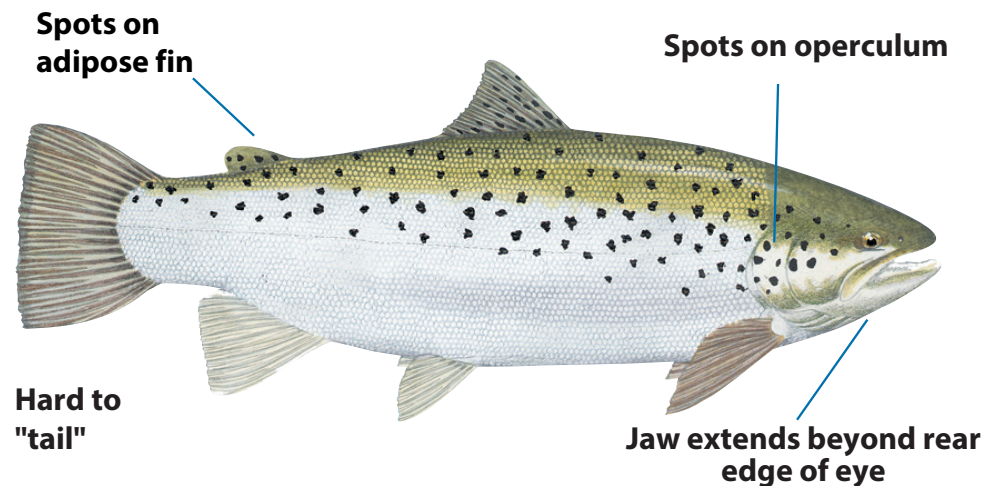


## Atlantic Salmon *Salmo salar*



Small vomerine (roof of mouth) teeth in a single row

## Brown Trout *Salmo trutta*



Well defined vomerine (roof of mouth) teeth in zig-zag pattern



This guide is an excerpt from "Salmon and Trout of the Great Lakes: A Visual Identification Guide", created by New York Sea Grant, a partnership program that delivers science-based solutions across New York's marine and Great Lakes regions. Artwork by Peter Thompson.

[newyorkeagrant.org/GLfisheries](http://newyorkeagrant.org/GLfisheries)